

## Excel Template Creation

### How To Convert Excel File to a CSV File

#### Home Page

The screenshot shows the Seller Center dashboard. At the top, there's a navigation bar with 'SELLERCENTER' on the left and 'Ravin Marketplace Change Seller' on the right. Below this is a menu with 'Products', 'Orders' (with a red '356' badge), 'Promotions', 'Reports', and 'Settings'. A 'Help' and 'Administration' link is also present. On the left, a green sidebar menu is open, showing options: 'Manage Products', 'Add a Product', 'Import Products' (with a green '86' badge), 'Manage Images' (with an orange '19' badge), and 'API Reference' (with a pink '99' badge). Below the sidebar is a table for 'All Order Items':

Category	Count
Today	192
In the last 30 days	8459
Shipped	433
Returned	9155
Cancelled	31895

A 'View your Orders' button is located below the table. The main content area features two 'Promotions' cards for Black Friday 2015. The first is for 'Phones & Tablets' with a countdown timer of 8:17:57 and a 20% price discount. The second is for 'TVs & Home Theaters' with a countdown timer of 8:18:04 and a 20% price discount. Both cards include a 'Join the Promotion' button and registration details. To the right, a 'Sales Summary' box shows 'EGP 19,752 Sales Today', with 'This Week' and 'This Month' both at EGP 109,051. Below this is an 'Account Health' section with three indicators: '48h Shipment bad' (3%), 'Returns verygood' (5%), and 'Cancellation rate bad' (24%). At the bottom, there's a 'News' section with a date of '22 Oct 2015' and a time of '15:24', mentioning 'SC App'.

- This is the Brief page of the seller center, Go to Products and the above list will appear, Then choose Import product to download the excel sheet to fill it

# Import Page

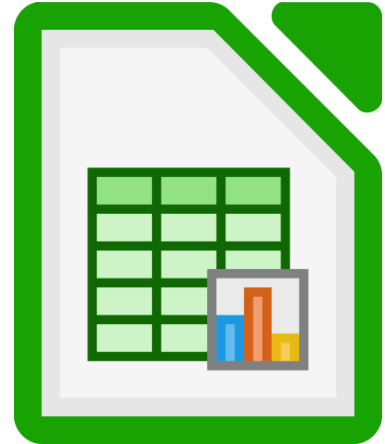
- Here is the Import page , Click on ( FASHION by Jumia/Watches / Fashion/Men Sale ) template sheet to start downloading the file

#	Type	Time requested	Time completed	Status	Download
9518	ProductCreationTemplate	04 Nov 2015 15:02	04 Nov 2015 15:02	Finished	<a href="#">Download</a>
9437	ProductCreationTemplate	03 Nov 2015 16:11	03 Nov 2015 16:11	Finished	Download link expired
9416	ProductCreationTemplate	03 Nov 2015 12:41	03 Nov 2015 12:41	Finished	Download link expired
9274	ProductCreationTemplate	01 Nov 2015 12:30	01 Nov 2015 12:30	Finished	Download link expired
9138	ProductCreationTemplate	29 Oct 2015 11:22	29 Oct 2015 11:23	Finished	Download link expired

- This is the end of the import page , Click on download to have the file on your computer ( Excel Version )



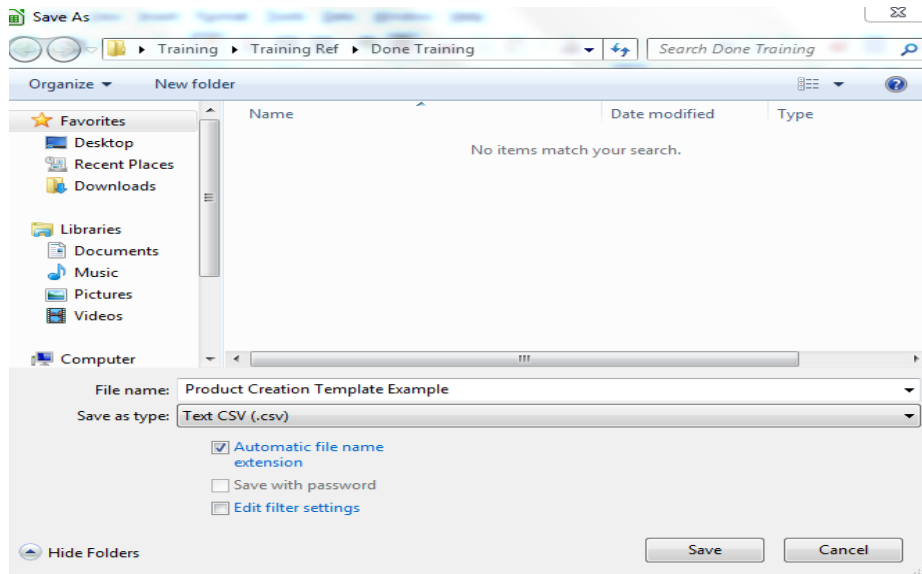
Excel Sheet



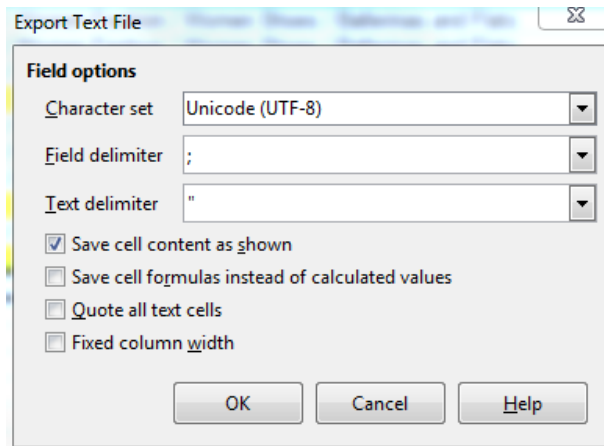
Libreoffice Calc

- After filling the excel version of the template , Save the file then open it with a program named " Libreoffice Calc "

# CSV Format



- Save the Libreoffice Calc Sheet as “ Text CSV “



- And this notification will appear after saving the Libreoffice Calc file as Text CSV , You will need to change some format to complete the converting process
  - First : You need to make the character set as “ Unicode ( UTF-8 )
  - Second : You need to make the field delimiter ( ; )
  - Then press OK

# Uploading

The screenshot displays the SellerCenter interface. At the top, the logo 'SELLERCENTER' is on the left, and 'Ravin Marketplace Change Seller' is on the right. A navigation bar contains icons for Products, Orders (with a '356' notification), Promotions, Reports, and Settings. Below this, the 'Import Products' section features a dropdown menu for 'Import Mode' (set to 'Please select') and a file selection area with a 'Choose File' button and an 'Upload File' button. The 'Download Templates' section is divided into 'Product Updates' (with links for Stock, Price, and Images) and 'Product creation by category' (with links for various product categories like TVs, Cameras, Computers, etc.).

- Then return to the import page , And choose from the Import Mode ( Create New Products )
- Then select the Libreoffice file , Then Upload the sheet
- In case you want to update any existing products , Choose from the Import Mode ( Update Existing Products )
- Stock Update Template : Download it in case you want to update the stock of the existing products then upload the sheet again as a Update Existing Products Mode
- Price Update : Download it in case you want to update the Original Price/Sale Price of the existing products then upload the sheet again as a Update Existing Products Mode

# Product Catalogue

**SELLERCENTER** Atlanta Imp & Exp Marketplace  
Change Seller

Products - Orders - Promotions - Reports - Settings - Help - Administration -

Manage Products  
Add a Product  
Import Products  
Manage Images  
API Reference

Live Image Missing Poor Quality Sold Out Inactive

Export + Add Name, SKU

	SKU	Created	Price	Sale Price	Available	Visible	Active
<a href="#">Long Sport Jilbab - 2XL</a>	1404-2 cilina Green Jilbab-2XL	02 Nov 2015	375.00	-	5		<input checked="" type="checkbox"/>
<a href="#">Long Sport Jilbab - XL</a>	1404-2 cilina Green Jilbab-XL	02 Nov 2015	375.00	-	8		<input checked="" type="checkbox"/>
<a href="#">Celina Hooded Long Sport Jilbab - M</a>	1404-1 red cilina jilbab-M	02 Nov 2015	375.00	-	12		<input checked="" type="checkbox"/>
<a href="#">Celina Hooded Long Sport Jilbab - S</a>	1404-1 red cilina jilbab-S	02 Nov 2015	375.00	-	8		<input checked="" type="checkbox"/>
<a href="#">Celina Hooded Long Sport Jilbab - L</a>	1404-2 cilina Green Jilbab-L	02 Nov 2015	375.00	-	10		<input checked="" type="checkbox"/>
<a href="#">Celina Hooded Long Sport Jilbab - M</a>	1404-2 cilina Green Jilbab-M	02 Nov 2015	375.00	-	10		<input checked="" type="checkbox"/>
<a href="#">Celina Hooded Long Sport Jilbab - S</a>	1404-2 cilina Green Jilbab-S	02 Nov 2015	375.00	-	4		<input checked="" type="checkbox"/>
<a href="#">Elina Modest Long sport Jacket</a>	1405-1 Elina Grey	29 Oct 2015	325.00	-	-		<input checked="" type="checkbox"/>

- As a final step :

Choose Manage Products from the Products Tab , To have a full view of the products you just downloaded with the Creation Sheet